

Alaska Department of Fish and Game

Habitat Section
Southeast Region



114-31-10130-2022-3046 Tributary 1

ADDITION

Water body name:

Survey date: 9/27/2023

Quad: Sitka D-5

Species & Lifestage:

Upper Reach Latitude: 57.968711 **Longitude:** -135.465090

Survey crew: FC, CD, NJ

Lower Reach Latitude: 57.969718 **Longitude:** -135.464876

Findings: We surveyed this uncataloged stream using a backpack electrofisher and GPS and captured juvenile coho salmon. The tributary stream flows through a roadside ditch and a 1 ft wide culvert, becoming less defined downstream (Table 1; Figures 1–3).

Recommendations: Add this uncataloged stream to the anadromous waters catalog for rearing coho salmon (Figure 4).

Nomination: Pending

Table 1.—114-31-10130-2022-3046 tributary 1 survey data.

| Waypoint | Latitude | Longitude | Notes | Stream Width ft | Stream Substrate | Habitat Features | Gradient % | Sample Effort | Sample Results |
|----------|-----------|-------------|--|-----------------|------------------------------|------------------|------------|---------------|----------------|
| 951 | 57.968716 | -135.465110 | 1-yr CO capture in stream in ditch paralleling road. | 4-6 | Fine Organic Small Gravel | | 2-4 | EF | 2 CO |
| 952 | 57.969405 | -135.465509 | 12" CMP poorly aligned with road ditch stream (90-degree angle turns at inlet and outlet). Inlet partially plugged with organic mud and grasses. Downstream of pipe, stream channel becomes less defined with water seeping over ground diffusely and heads toward cataloged stream. | | | | | Not Fished | |



Figure 1.—Juvenile coho salmon captured at waypoint 951.



Figure 2.—Channel and culvert inlet at waypoint 952.



Figure 3.—Culvert outlet at waypoint 952.

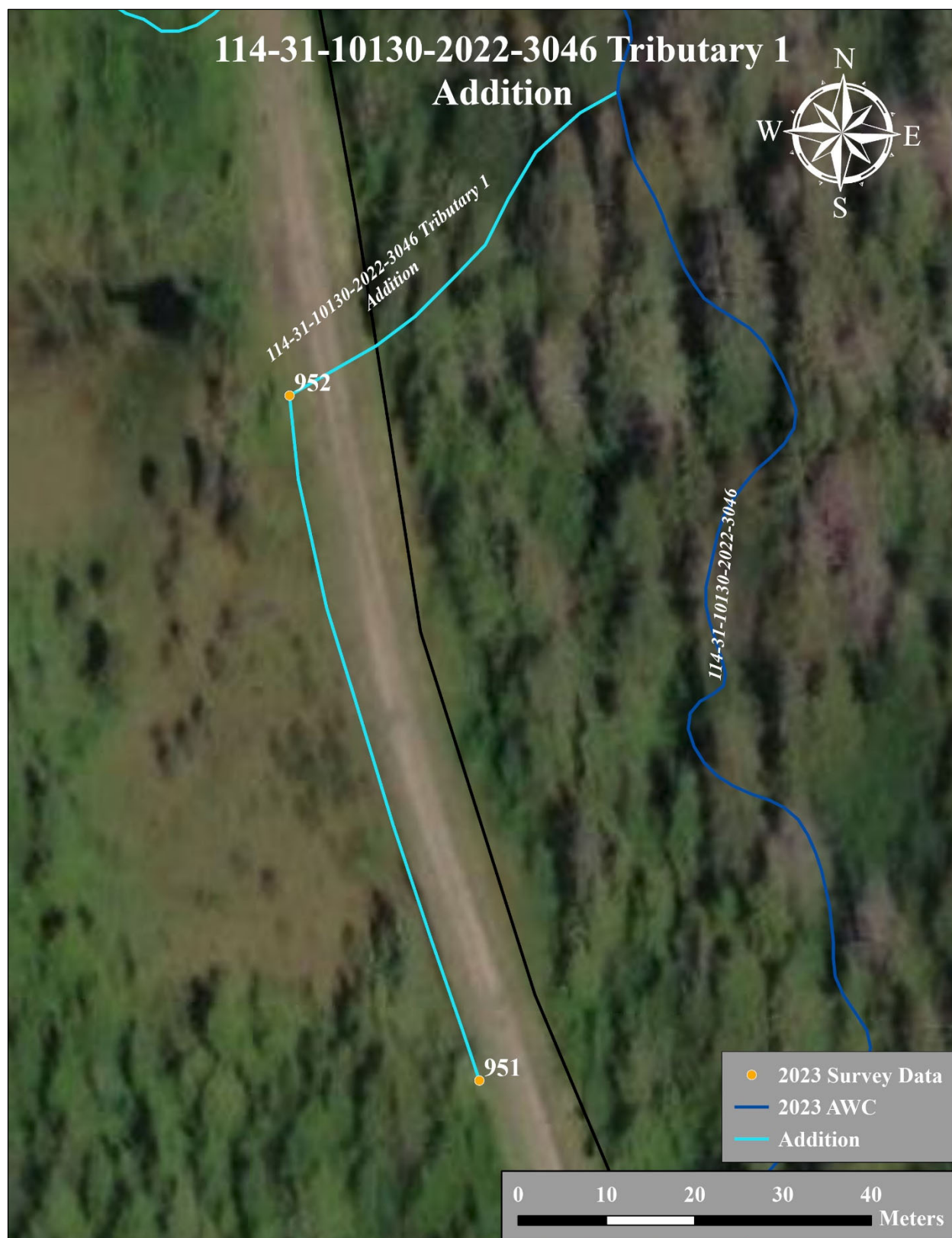


Figure 4.—114-31-10130-2022-3046 tributary 1 addition map.